



In



LIFE'S MOST VALUABLE POSSESSION

A Project of:





Bahria Enclave Islamabad

A LIFESTYLE DESTINATION PROJECT OF BAHRIA TOWN

Asia's largest private property developer and Pakistan's premium real estate solution provider - Bahria Town launched its flagship project in Islamabad. This is famously tagged as "**Bahria Enclave**." Merely at 10 to 12 minute drive from Islamabad Club, Bahria Enclave is the most luxurious planned developed of the twin cities. Spread over multiple sectors, zones & boulevards - the enclave offers a number of commercial & Residential investment & living opportunities.

LIFE'S MOST VALUABLE POSSESSION






BAHRIA ENCLAVE
ISLAMABAD



PROPERTY TIME

Project Marketer's Profile

Property Time has established itself backed by the legacy of over 20 years of specialized work of its CEO Rana Muhammad Akram - in the field of property marketing & management. During this time, he has managed a diverse range of residential, commercial and mixed - purpose properties of prestige.

Besides its credibility as a steadfast, honest and upright advisor to real estate investors, Property Time is also known for the fact that it has one of the most educated and professional marketing teams in Pakistan.

With proper training in project marketing, sales & customer services, Property Time teams are always welcoming clients & investors at its exclusive offices in I-8 Markaz, F-8 Markez and at Capital Mall & Residency project site (Civic Zone, Bahria Envlave).

LIFE'S MOST VALUABLE POSSESSION



LIFE'S MOST VALUABLE POSSESSION



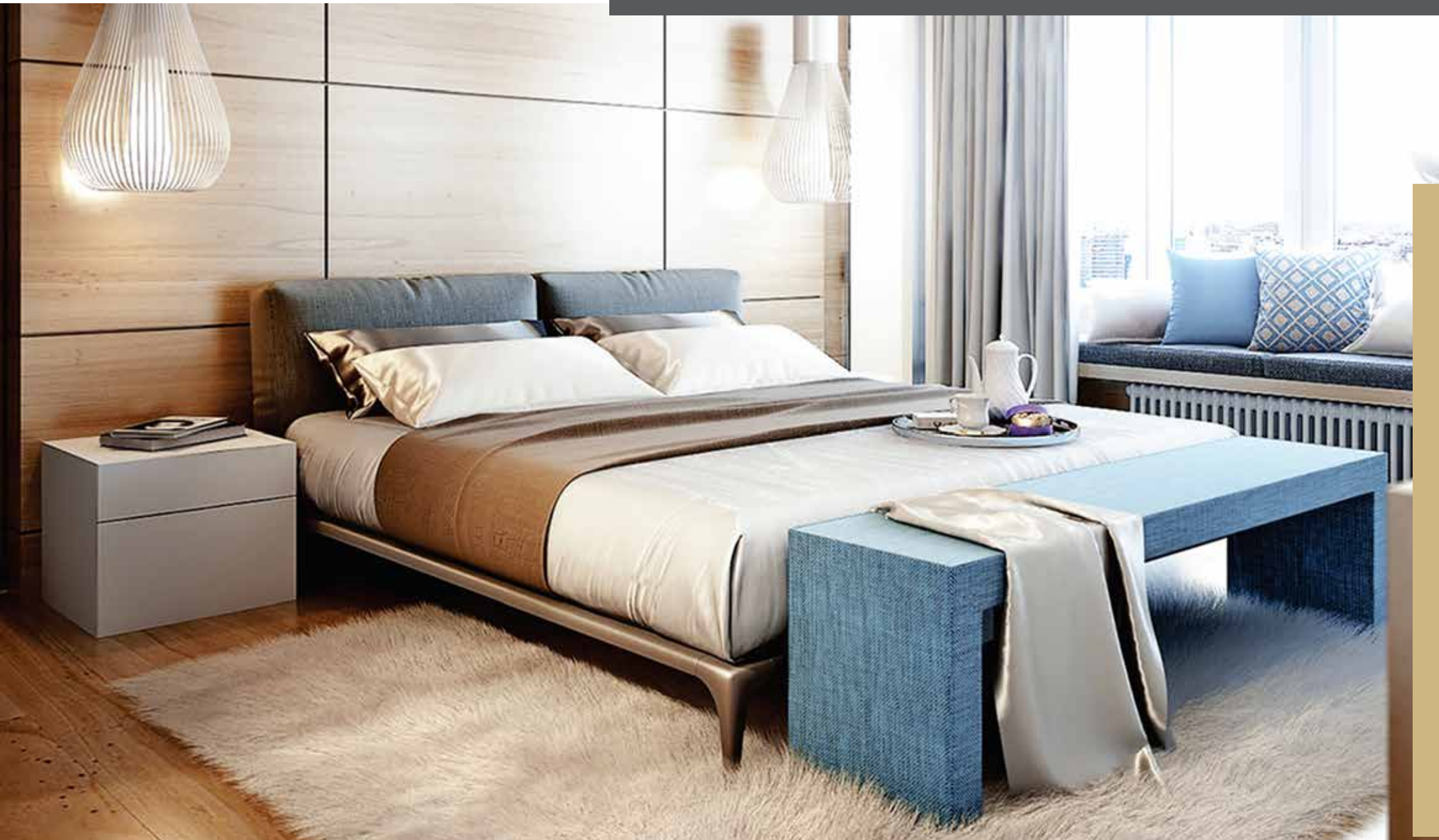
LIFE'S MOST VALUABLE POSSESSION



LIFE'S MOST VALUABLE POSSESSION



LIFE'S MOST VALUABLE POSSESSION



LIFE'S MOST VALUABLE POSSESSION

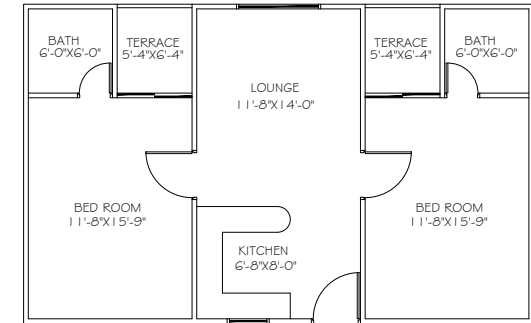
CLASSIC 1-BED APARTMENT



- ▶ 980 square feet of couple / independent living luxury and customizable studio living.
- ▶ Comprises of one master-bed with options to merge the soft-walls into the studio area.
- ▶ Panoramic life-size window and accessible terrace.
- ▶ Integrating Lounge with leisure/dining-counter area.
- ▶ American open kitchenette.
- ▶ Dedicated parking space of one car.

LIFE'S MOST VALUABLE POSSESSION

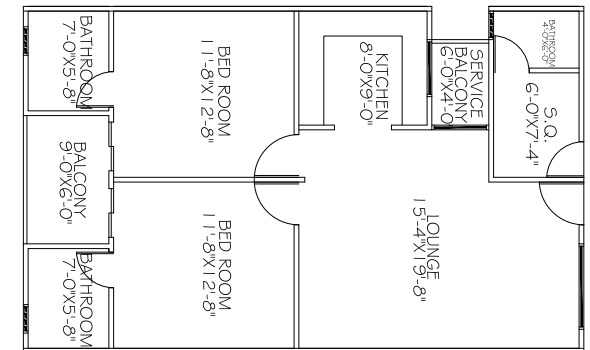
PREMIUM-PLUS 2-BED APARTMENT



- ▶ 1275 square feet of couple / independent living luxury and customizable studio living.
- ▶ Comprises of one master-bed with options to marge the soft-walls into the studio area.
- ▶ Panoramic life-size window and accessible terrace.
- ▶ Integrating Lounge with leisure/dining-counter area.
- ▶ American open kitchenette.
- ▶ Dedicated parking space of one car.

LIFE'S MOST VALUABLE POSSESSION

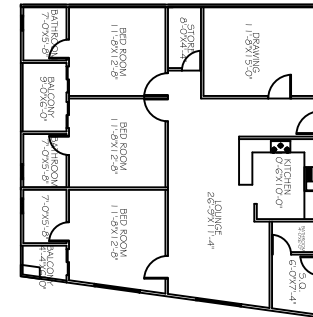
PREMIUM 2-BED APARTMENT



- ▶ 1450 square feet of couple / independent living luxury and customizable studio living.
- ▶ Comprises of one master-bed with options to merge the soft-walls into the studio area.
- ▶ Panoramic life-size window and accessible terrace.
- ▶ Integrating Lounge with leisure/dining-counter area.
- ▶ American open kitchenette.
- ▶ Dedicated parking space of one car.

LIFE'S MOST VALUABLE POSSESSION

SIGNATURE 3-BED APARTMENTS



- ▶ 2,300 square feet of luxurious space full of house amenities.
- ▶ Comprises of one master-bed, one family-bed and one quest-room.
- ▶ Panoramic life-size windows and directly accessible terrace.
- ▶ Integrating Television Lounge with dining area.
- ▶ A dedicated drawing room with tasteful aesthetics.
- ▶ Separate yet connected laundry & servant quarter.
- ▶ Dedicated parking space for two cars.

LIFE'S MOST VALUABLE POSSESSION

CAPITAL MALL

SHOP'S PREVIEW



LIFE'S MOST VALUABLE POSSSION



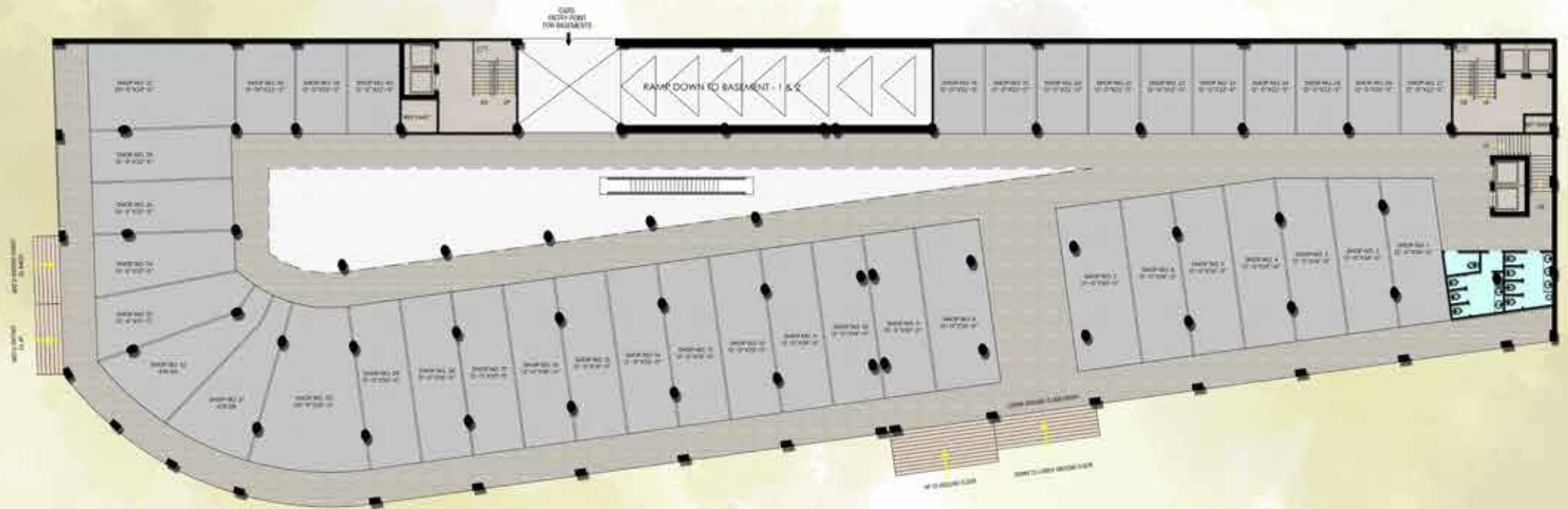
LIFE'S MOST VALUABLE POSSESSION

GROUND FLOOR PLAN



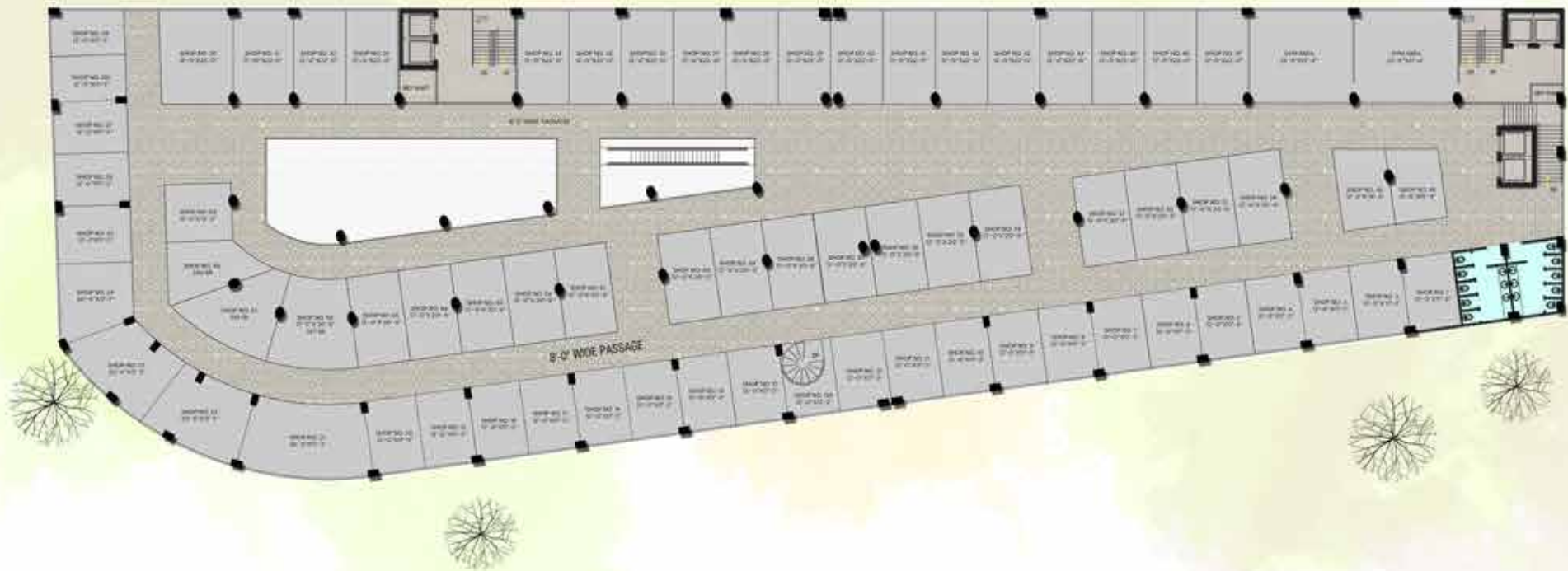
LIFE'S MOST VALUABLE POSSESSION

LOWER GROUND FLOOR PLAN



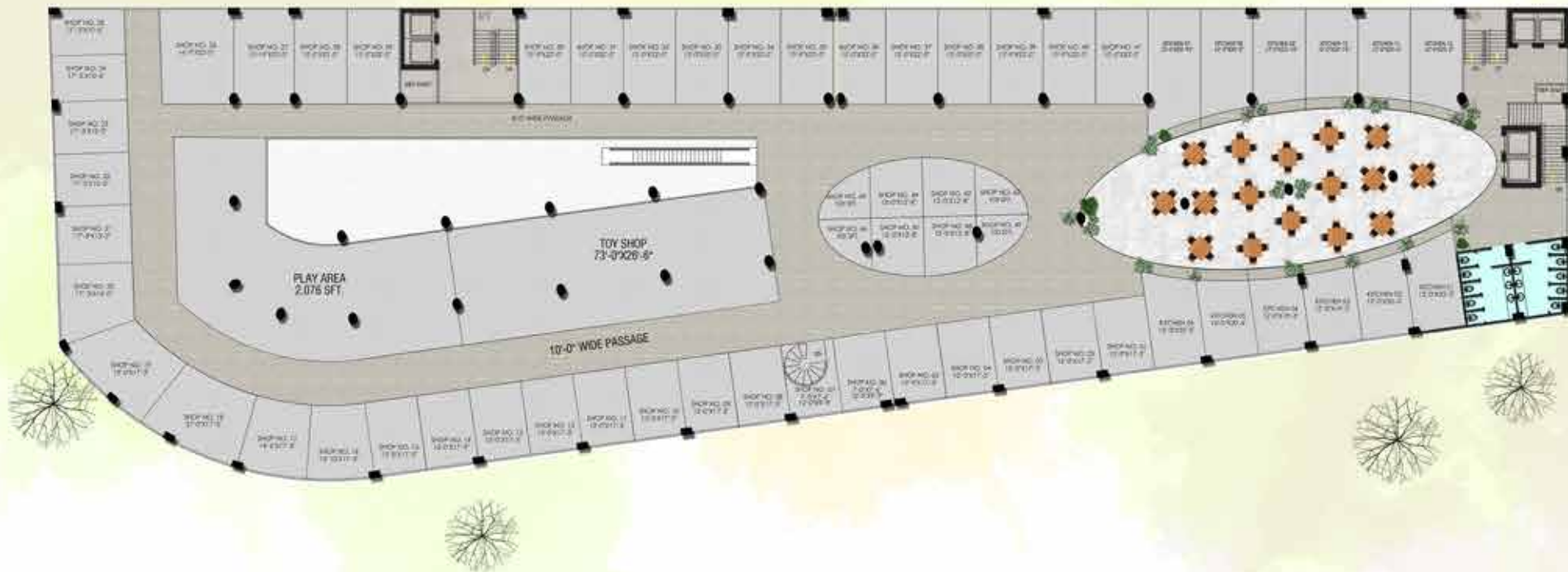
LIFE'S MOST VALUABLE POSSESSION

MEZZANINE FLOOR PLAN



LIFE'S MOST VALUABLE POSSESSION

FIRST FLOOR PLAN

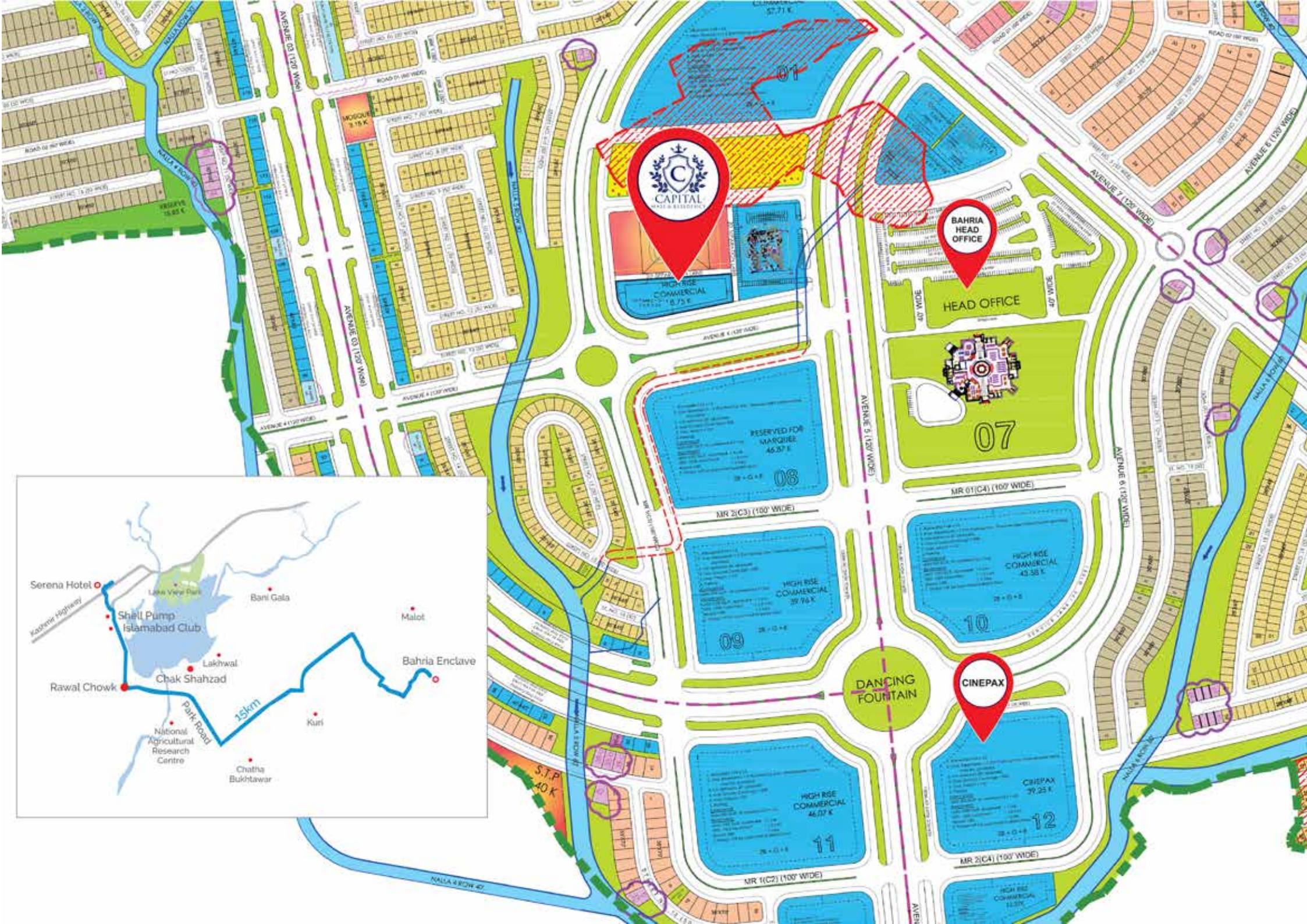


LIFE'S MOST VALUABLE POSSESSION

APARTMENTS 2ND TO 6TH




LIFE'S MOST VALUABLE POSSESSION





LIFE'S MOST VALUABLE POSSESSION



HEAD OFFICE

-  Ahmed Center, I-8 Markaz, Islamabad
-  Royal Inn Plaza, F-8 Markaz, Islamabad
-  0321 5151 702

SITE OFFICE

-  Plot # 6-A, Civic Zone,
Bahria Enclave Islamabad
-  www.propertytimepk.com

UAN: 051 111 111 045 | 0300 950 4603 | 0300 516 9294